

# Alaska Department of Fish and Game

Habitat Section  
Southeast Region



## 114-31-10130 Tributary 4

## ADDITION

**Water body name:**

**Survey date:** 6/27/2022

**Quad:** Juneau A-5

**Species & Lifestage:**

**Upper Reach Latitude:** 58.060444 **Longitude:** -135.486434

**Survey crew:** FC

**Lower Reach Latitude:** 58.061399 **Longitude:** -135.486482

**Findings:** We surveyed this uncataloged stream using a baited minnow traps and GPS and captured juvenile coho salmon. The tributary stream was dry/disconnected just upstream of where it flows under an old bridge; however, it was actively being fed by roadside drainage from a sheer bedrock fall/chute on the downstream side of the river-right bridge abutment (Table 1; Figures 1–3).

**Recommendations:** Add this uncataloged stream to the anadromous waters catalog for rearing coho salmon (Figure 4).

**Nomination:** Pending

Table 1.—114-31-10130 tributary 4 survey data.

Waypoint	Latitude	Longitude	Notes	Stream Width ft	Stream Substrate	Habitat Features	Gradient %	Sample Effort	Sample Results
864	58.060358	-135.486552	Small trickling stream present with marginal rearing habitat under old bridge in good condition. Stream dry/disconnected upstream of road crossing. Water trickling in from river-right tributary immediately resulting in steep-gradient bedrock fall/chute along downstream side of bridge abutments. Minnow trap soaked in small pool ~40' downstream of road crossing < 1 hr. 1-yr CO capture; one fell from trap.	2-4	Small Gravel Fine Organic		1-2	MT	2 CO



Figure 1.—Juvenile coho salmon captured at waypoint 864.



Figure 2.—Channel overgrown with skunk cabbage at waypoint 864.



Figure 3.—Water feeding into tributary 4 from bridge-side bedrock fall/chute at waypoint 864.



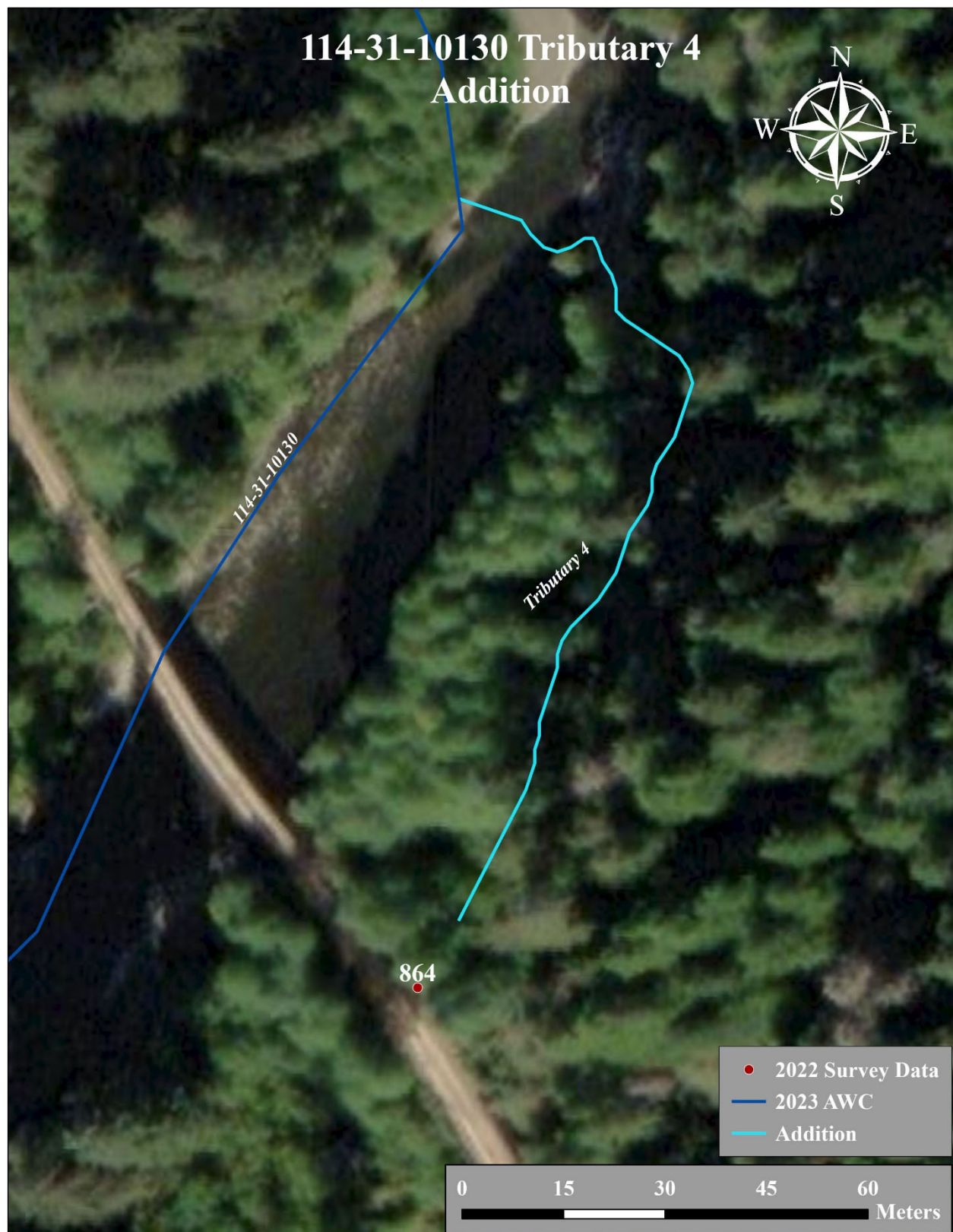


Figure 4.—114-31-10130 tributary 4 addition map.